

## BI-METAL SPEEDXCUT XTRA DEEP 165MM MXqs

The extra deep Bi-metal Hole Saws M42, **including the unique MXqs adapter** **AND also including the unique quick release MXqs arbor**, are especially designed to cut deep and smooth in a wide range of materials. With a cutting depth of 165mm, these hole saws are e.g. perfect for use as roof transit saws. The special tooth style provides a smooth cut, also on irregular surfaces. With the unique drilling guide pin drilling is safe and secure!

### FEATURES

- Always delivered with the MXqs quick release adapter AND arbor
- Bi-metal with 8% cobalt alloy for a longer lifetime
- **Cutting depth 165mm**
- Smooth cutting with minimal heat build up
- Suitable for use in electric and battery powered tools
- Drilling deep under an angle is easy when using a longer center pin\*
- Extra-long side slots for easy core release



### MXqs Xtra DEEP - ARBOR



**MX2P1006B**  
MXqs Arbor  
Drill Chuck Hex 11 - 7/16"PB



**MX2P1006SB**  
MXqs Arbor  
Drill Chuck SDS-Plus

### MXqs Xtra DEEP - DRILLS 165 for pre-drilling

#### MX2P0070B

Woodworking Drill (Auger Bit) For Bi-M & TCT Hole saws L=165mm  
Drill Chuck Hex 11 - 7/16"PB. To drill the hole for the deep guide pin.



#### MX2P0074B

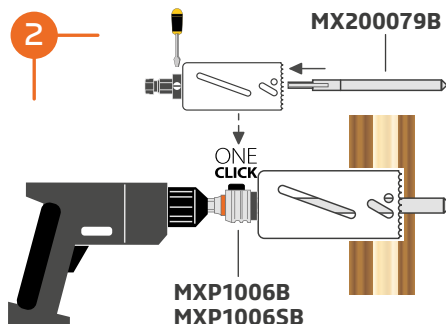
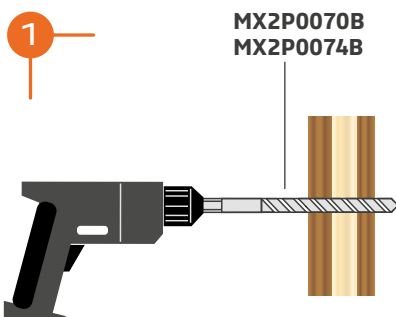
HSS Drill For Bi-M Hole saws L=165mm  
Drill Chuck Hex 11 - 7/16"PB. To drill the hole for the deep guide pin.



### MXqs Xtra DEEP - GUIDE PIN

#### MX200079B

Guide pin - For Bi-Metal & TCT Hole saws L=165mm

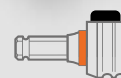


MXqs

ONE  
CLICK

165mm

165mm



XTRA DEEP

Part No.**	Ø MM	Ø INCH
MHM40Q044B	44	1 3/4
MHM40Q060B	60	2 3/8
MHM40Q068B	68	2 11/16
MHM40Q083B	83	3 1/4
MHM40Q102B	102	4
MHM40Q111B	111	4 3/8
MHM40Q121B	121	4 3/4
MHM40Q133B	133	5 1/4
MHM40Q152B	152	6

\*\*Including MXqs ONE CLICK Quick Change Arbor MX2P1006B and Adapter, excl. guide pin. Guide pin must be ordered separately.

## BI-METAL SPEEDXCUT XTRA DEEP 300MM MXqs

The extra deep Bi-metal Hole Saws M42, including the unique MXqs adapter AND also including the unique quick release MXqs arbor, are especially designed to cut deep and smooth in a wide range of materials. With a cutting depth of 300mm, these hole saws are e.g. perfect for use as roof transit saws. The special tooth style provides a smooth cut, also on irregular surfaces. With the unique drilling guide pin drilling is safe and secure!

### FEATURES

- Always delivered with the MXqs quick release adapter AND arbor
- Bi-metal with 8% cobalt alloy for a longer lifetime
- **Cutting depth 300mm**
- Smooth cutting with minimal heat build up
- Suitable for use in electric and battery powered tools
- Drilling deep under an angle is easy when using a longer center pin\*
- Extra-long side slots for easy core release



### MXqs Xtra DEEP - ARBOR



**MX2P1006B**  
MXqs Arbor  
Drill Chuck Hex 11 - 7/16"PB



**MX2P1006SB**  
MXqs Arbor  
Drill Chuck SDS-Plus

### MXqs Xtra DEEP - DRILLS 300 for pre-drilling

#### MX2P0071B

Woodworking Drill (Auger Bit) For Bi-M & TCT Hole saws L=300mm  
Drill Chuck Hex 11 - 7/16"PB. To drill the hole for the deep guide pin.



#### MX2P0075B

HSS Drill For Bi-M Hole saws L=300mm  
Drill Chuck Hex 11 - 7/16"PB. To drill the hole for the deep guide pin.



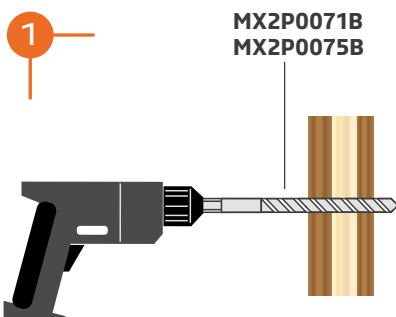
### MXqs Xtra DEEP - GUIDE PINS

#### MX200078B

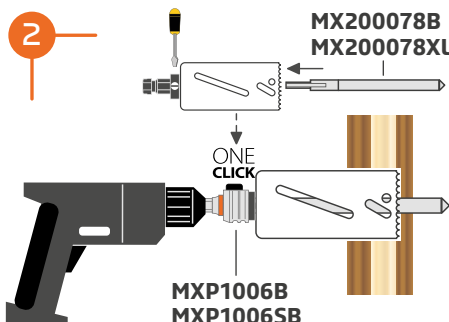
Guide pin - For Bi-M & TCT Hole saws L=300mm

#### MX200078XL

Guide pin - For Bi-M & TCT Hole saws L=515mm (Pitched roofs)



**MX2P0071B**  
**MX2P0075B**



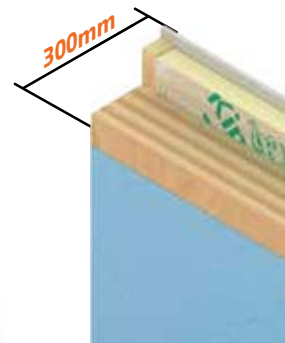
**MX200078B**  
**MX200078XL**

**MXP1006B**  
**MXP1006SB**



MXqs

ONE  
CLICK



Part No.**	Ø MM	Ø INCH
MHM41Q044B	44	1 3/4
MHM41Q060B	60	2 3/8
MHM41Q068B	68	2 11/16
MHM41Q083B	83	3 1/4
MHM41Q102B	102	4
MHM41Q111B	111	4 3/8
MHM41Q121B	121	4 3/4
MHM41Q133B	133	5 1/4
MHM41Q152B	152	6

\*\*Including MXqs ONE CLICK Quick Change Arbor MX2P1006B and Adapter, excl. guide pin. Guide pins must be ordered separately.



\* Drilling pitched roofs or under an angle: Pre-drill, then use a hole saw of 300mm length with a L=515 center pin.