



## DIAMOND CORE DRILLS **MXqs** CONCRETE<sup>X</sup>DRY

The Mandrex Concrete<sup>X</sup>dry core drills are robust and built to last under high-pressure conditions. The laser welded segments have been specially developed to ensure an extremely long lifetime.

Fast and clean cutting is ensured when used in combination with the Mandrex MXqs ONE CLICK Hole Saw system.

### FEATURES

- High quality professional grade diamond
- Segment height 9mm
- Laser welded for strength and universal drilling
- Ideal for (soft) stone, brickwork and concrete
- Fast and accurate cuts
- Premium grade diamond segments
- Side holes for release of dust
- Cutting depth 60mm (2-3/8")
- Dry drilling, no water required



Part No.*	Ø MM	Ø INCH
MDDB1Q068B	68	2 11/16
MDDB1Q072B	72	2 13/16
MDDB1Q082B	82	3 15/64

### MXqs Concrete<sup>X</sup>cut ARBORS, PILOT DRILL & ADAPTERS



**MX200027B**  
MXqs Arbor with TCT pilot drill  
Drill Chuck Hex 11 - 7/16"PB



**MX200028B**  
MXqs Arbor with TCT pilot drill  
Drill Chuck Hex 8,5 - 11/32"PB



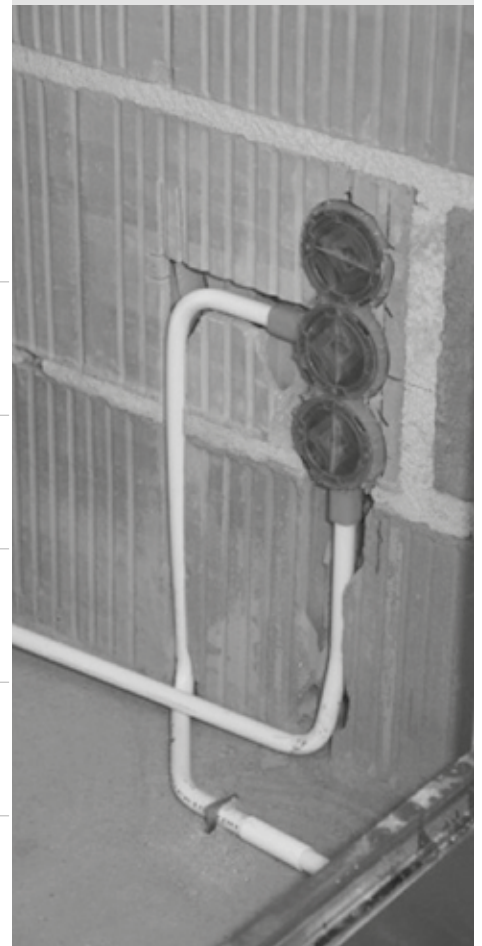
**MX200029B**  
MXqs Arbor with TCT pilot drill  
Drill Chuck SDS-plus



**MX2P0067B**  
MXqs Pilot drill for Concrete<sup>X</sup>cut  
with TCT tungsten carbide tip.  
L=150mm



**MX2P0058B**  
MXqs adapter with M16x2 thread for use with e.g.  
Concrete<sup>X</sup>cut dry cut core drills. 3 Pieces/package



\*To order Concrete<sup>X</sup>dry with M16x2 thread, replace the "Q" in the Part No. with "O"